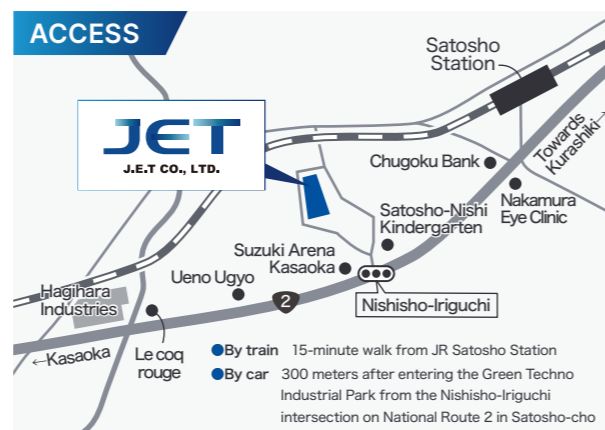


Company name	J.E.T Co., LTD.
Representative	President & CEO Masayuki Bouno
Address	6078 Shinjo Kanayama, Satosho-cho, Asakuchi-gun, Okayama 719-0302
TEL	0865-69-4080
Foundation	April 2009
Capital	1,848.88 million yen
Number of employees	171 persons ※Number of employees including consolidated companies: 298 (as of June 30, 2024)
Business details	Development, design, manufacture, sales, after-sales service, etc., of semiconductor cleaning equipment



## Each base

### ■ Tokyo Office

KTD Kyowa Building Ozakudai 2F, 1-4-21 Ozakudai, Hamura-shi, Tokyo 205-0001  
TEL:042-533-5182 FAX:042-533-5183

### ■ Osaka Office

Sumitomoseimei Shin-Osaka Kita Building 9F, 4-1-14 Miyahara, Yodogawa-ku, Osaka-shi, Osaka 532-0003  
TEL:06-6125-5000 FAX:06-6125-5050

### ■ Kyushu Branch Office

1-3-3 Hanatakamatsu, Oita-shi, Oita 870-0915  
TEL:097-556-8666 FAX:097-556-7811

## Subsidiaries

### ■ J.E.T. Agri Co., Ltd. (Kasaoka Farm) <Agribusiness>

97 Heisei-cho, Kasaoka City, Okayama Prefecture 714 0054  
TEL:0865-63-8151 FAX:0865-63-8150

### ■ J.E.T. SEMI-CON. INTERNATIONAL TAIWAN, INC.(HEAD Office)

協裕國際科技股份有限公司  
3F-2, No.30, Taiyuan St., Jhubei City, Hsinchu County 302, Taiwan, R.O.C.  
TEL:+886-3-552-5666 FAX:+886-3-552-5669

### ■ J.E.T. KOREA CO., LTD.

132, Anyeongnam-ro, Hwaseong-si, Gyeonggi-do, 18363 Korea  
TEL:+82-31-267-2177 FAX:+82-31-267-2179

### ■ Oribright Shanghai Co., Ltd.

欧利白科技(上海)有限公司(本社)  
Room 2501B, Bld. A, Baodi Plaza, No. 688, Dalian Road, Yangpu Dist., Shanghai, 200082, P.R.China  
TEL:+86-21-60452760 FAX:+86-21-60452768

### ■ JET AMERICA INC.

100 E Royal Lane, Irving, TX 75039 USA

Website



# A strong technological foundation created with world-leading technology

Business Infrastructure



## Management Philosophy

We will continue to put our customers first, strive to build a good, strong company, value people, and contribute to society.

## Company Policy

01 When you put a date on a dream,  
**it becomes a goal**

02 When you separate your goals,  
**it becomes a plan**

03 When you execute your plan,  
**it becomes reality**

## Greeting

Semiconductors are at the foundation of advanced technologies. J.E.T. is a company that supports those semiconductors.

We have also expanded our technological development capabilities into new energy fields, such as lithium-ion battery testing equipment, and we are providing a wide range of support to improve the comfort and convenience of people's lives.

The field of technology is evolving at a dizzying pace.

As a company operating in the midst of that change, we will continue to evolve with a focus on "taking on the challenge of new technologies" and "creating more useful products."

President & CEO **Masayuki Bouno**



# JET'S CREDO

## Six promises for the future

We think and act based on six promises. By ensuring that each and every one of us understands and prepares for these, we aim to be a group of professionals who can contribute to the world at large.



### Spirit

We start by taking a step forward. We are energized by dreams, passion and an attitude of never giving up.



### People

We value the power of people above all else. As we approach our work, we have compassion for each other, trust each other, and deepen our bonds.



### Customers

We always think from the customer's perspective. We will do our best to impress our customers.



### Taking on challenges

We value an attitude of taking on challenges. We all work together to support the ability to take on challenges.



### Quick action

We are always conscious of speed and efficiency, and we do not neglect our preparations. We will respond flexibly with an awareness of looking one step ahead.



### Technology

The future will come from our technology. We will always share the latest information and pass on and nurture technology.

## History

- April 2009** Established J.E.T. Co., LTD.
- May 2009** Acquired the Okayama GT Plant (currently the Head Office Plant) semiconductor business division of S.E.S. Co., Ltd., through business transfer  
At the same time, acquired all shares held by S.E.S. Co., Ltd. in its local subsidiary "Kyoyu International Science and Technology Co., Ltd. (now J.E.T. Semi-Con. International Taiwan, Inc.)," in Taiwan, "Ai Shiyi Electronic Trading (Shanghai) Co., Ltd. (now Oribright Shanghai Co., Ltd.)" in China, and "K.S.E.S. Co., Ltd." in South Korea through business transfers, and made them into subsidiaries
- December 2009** Liquidated the South Korean subsidiary "K.S.E.S. Co., Ltd."
- January 2010** Changed the trade name of Chinese subsidiary "Ai Shiyi Electronic Trading (Shanghai) Co., Ltd." to "Jieyidi Electronic Trading (Shanghai) Co., Ltd."
- December 2012** Increased capital at Chinese subsidiary "Jieyidi Electronic Trading (Shanghai) Co., Ltd.," underwritten by ZEUS, and changed the company name to "ZEUS China Co., Ltd."
- August 2014** Entered into the lithium-ion battery (hereinafter called LIB) inspection and manufacturing equipment business
- March 2019** Acquired shares of the Chinese subsidiary "ZEUS China Co., Ltd." from ZEUS and made it into a wholly owned subsidiary
- September 2019** Changed the trade name of the Chinese subsidiary "ZEUS China Co., Ltd." to "Oribright Shanghai Co., Ltd."
- September 2020** Established the South Korean subsidiary "J.E.T. Korea Co., Ltd."
- November 2020** Entered into the agribusiness (OSMIC agri-products production business operated by OSMIC CO., Ltd. as a franchise)
- March 2021** Listed on the TOKYO PRO Market of the Tokyo Stock Exchange
- October 2021** Established J.E.T. Agri Co., Ltd.
- September 2023** Delisted from the TOKYO PRO Market of the Tokyo Stock Exchange  
Listed on the Standard Market of the Tokyo Stock Exchange
- October 2023** Established U.S. subsidiary "JET AMERICA INC."



# Semiconductor Business

We develop, design, manufacture, sell, and maintain semiconductor cleaning equipment used in the front end processing in semiconductor manufacturing

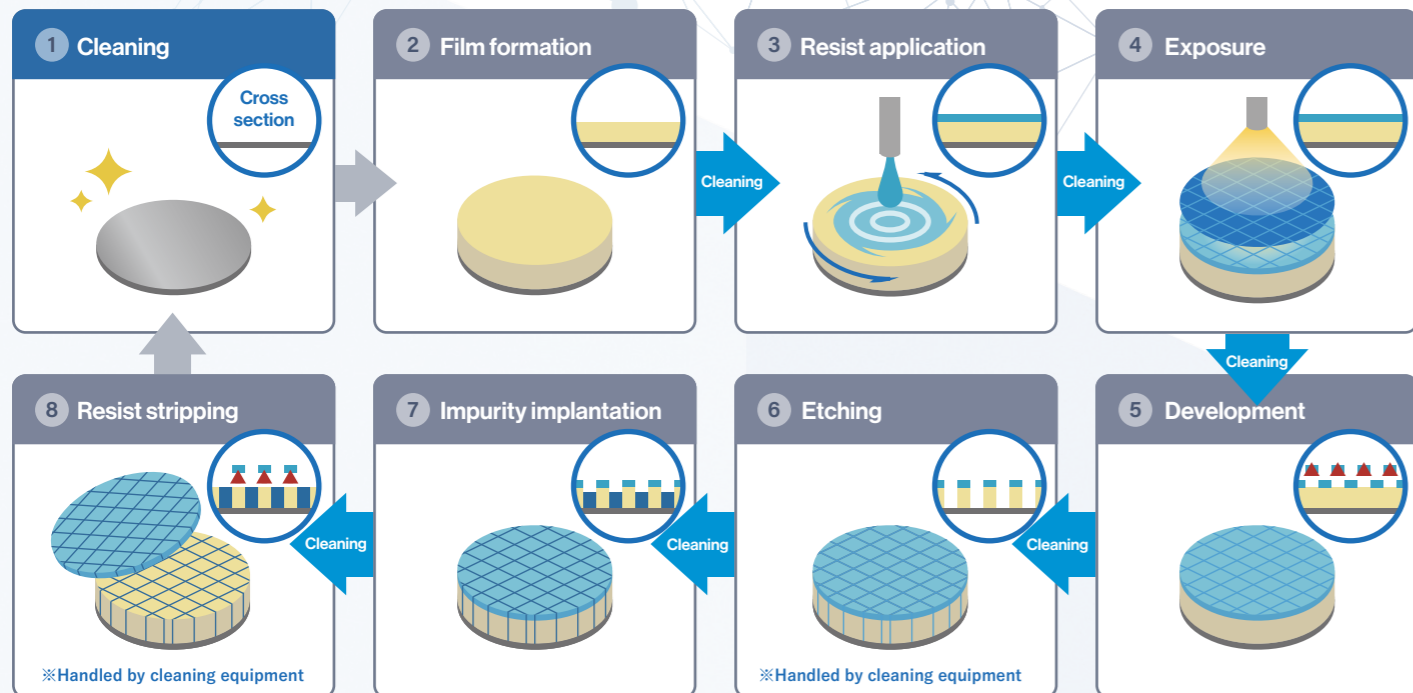
The semiconductor cleaning equipment developed by our company can be precisely customized to meet the requirements of the customer. This differentiates it from the cleaning equipment of other companies, which have less flexibility in customization. We can respond to the requirements with our differentiated technology. We sell mainly to semiconductor manufacturers in South Korea, China and Taiwan, and have also started sales in Japan and the United States.



## Scenes in which semiconductor cleaning equipment is used

### Front end processing

Of the 500 or more front end processes in the semiconductor manufacturing process, 30 to 40% (based on the number of processes) are thought to use cleaning equipment.



The front end processes are repeated several times and then the products move on to the back end processing

## Main products

### BW3700

Supports 300 mm wafers

Batch type cleaning equipment



### BW3000

Supports 300 mm wafers

Batch type cleaning equipment



### BW2000

Supports 200 mm wafers

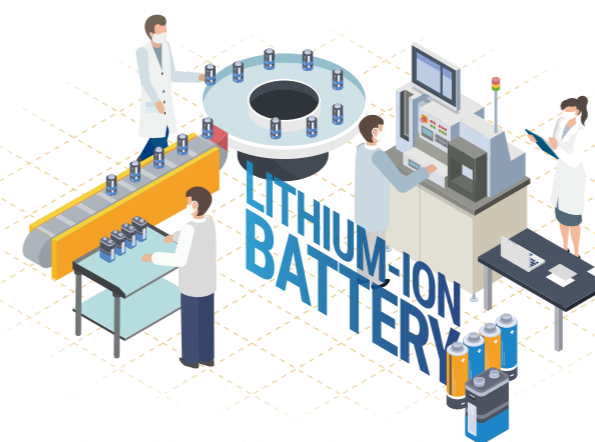
Batch type cleaning equipment



### HTS-300

Supports 300 mm wafers

Single wafer cleaning equipment



## LIB Business

We sell inspection and manufacturing equipment related to lithium-ion batteries (LIB)

We are expanding our business in inspection and manufacturing equipment for lithium-ion batteries (LIB), which is a business that is expected to grow. Heat generation, ignition and explosion are all weaknesses of LIBs and our equipment makes it possible to detect these risks at the manufacturing stage. We have patented our foundational technology in this area. We have also begun to support all-solid-state batteries.

## Agribusiness

We produce safe agricultural products with organic soil and low use of agricultural chemicals

We are also working to make effective use of farmland.

We adopted the OSMIC agri-products production business that has been developed as a franchise by OSMIC Co., Ltd., and began shipping tomatoes with high sugar content in November 2020. In October of the following year, we established J.E.T. Agri Co., Ltd., as an independent corporation in order to thoroughly manage individual profitability.

※OSMIC agri-products are agricultural products cultivated using the organic soil cultivation method developed by OSMIC Co., Ltd.



## Efforts for the Environment (E), Society (S), and Governance (G), which are important for sustainable corporate growth



Environment



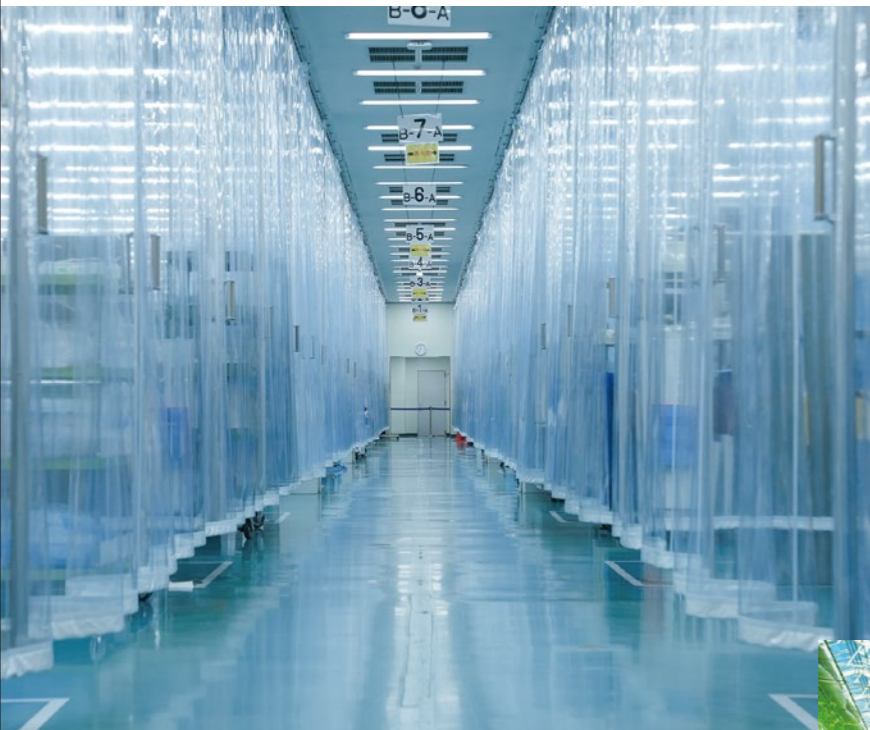
Social



Governance

We believe that as J.E.T. continues to grow, realizing a sustainable society through efforts such as ESG and the SDGs will strengthen the foundations of our corporate management and lead to further growth.

We will value everyone involved in J.E.T. and work to make further contributions to society as we strive to create a "strong and good company," which is a goal we have also stated in our management philosophy.



### Efforts for the environment



#### 01 Consideration for the environment

Semiconductor manufacturing processes use a large amount of water (pure water) and chemicals (chemical substances), so there are demands for the development of manufacturing technologies to reduce the impact on the environment.

Our company aims to reduce the environmental impact of semiconductor manufacturing processes worldwide through the development of cleaning equipment that "supports processes that use chemicals with low environmental impact," "supports technologies that reduce the amount of chemicals used," and "supports technologies for water use reduction and water reuse."



#### 02 Agribusiness development

We produce safe agricultural products with organic soil and low use of agricultural chemicals. We are also working to make effective use of farmland.

### Efforts for society



#### 01 Implementing work style reform

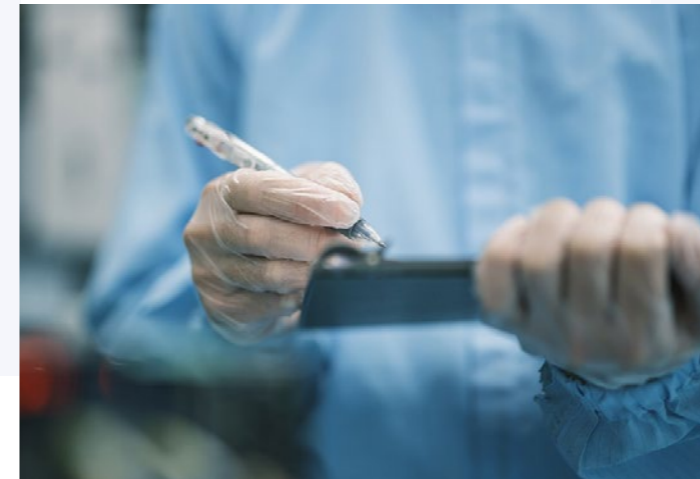
We provide a sound and healthy working environment for all employees. We also encourage employees to take annual paid leave.

#### 02 Career development

We foster a culture of learning and a climate of nurturing in the workplace. We support leader development, the provision of personalized learning opportunities, and career development throughout working life.

#### 03 Contribution to regional revitalization

We support the realization of sustainable local communities by actively hiring local human resources and by continuing collaboration with local businesses. We also supply cherry tomatoes to the Okayama Marathon.



### Efforts for governance



#### 01 Strengthening of compliance functions

We strive to comply with all laws and ordinances, internal rules and social norms.

We are focusing efforts on initiatives to ensure transparency and fairness in our decision-making, the appropriateness of our information disclosure, and the effectiveness of our internal control systems.

#### 02 Thorough risk management

We are working to establish and strengthen management foundations that will support our efforts to earn the trust of stakeholders and to maintain and enhance our corporate value. As part of that, we have established and operate a risk management committee and are promoting comprehensive risk management.

### Social action activities

#### Measures for the corporate version of hometown tax

By making donations to local governments, companies can support local revitalization and the creation of a sustainable society, while at the same time fulfilling their social responsibilities.

##### ●Kasaoka City

"Kasaoka City support plan for town development to mitigate disasters through self-aid and mutual aid" project (September 2021)

##### ●Asakuchi City

"Plan to promote the creation of the town, people and jobs in Asakuchi, the city of astronomy" (June 2021)

##### ●Ibara City

"Project utilizing donations for the creation of the town, people and jobs" (August 2021)

